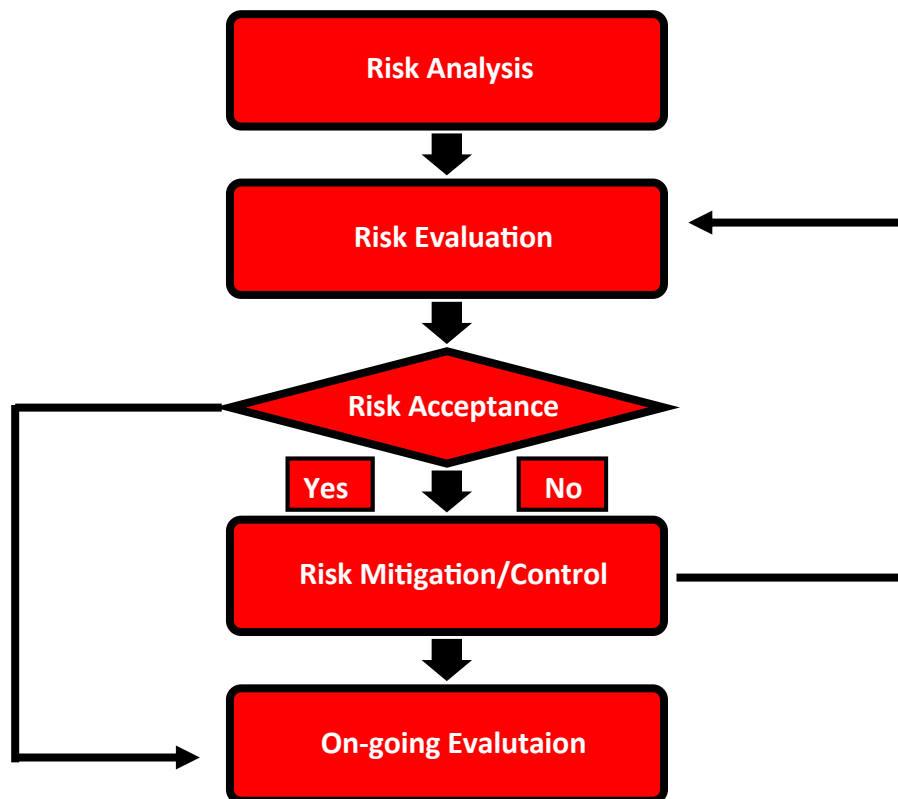


RISK MITIGATION STRATEGY



Risk Analysis

- Identify the system
- Identify hazards and possible harms

Risk Evaluation

- Estimate, justify and document risk level (probability/severity)

Risk Acceptance

- Compare risk with acceptance criteria
- Accept or reject risk

Risk Mitigation/Control

- Estimate costs of mitigation vs non-mitigation
- Define and take actions for mitigation

On-going Evaluation

- Monitor for new harms
- Monitor risk levels
- Update plan and take actions